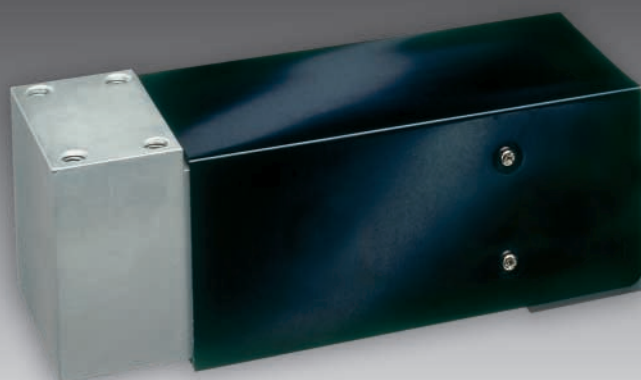




MP 52

High Capacity Single Point Load Cell



50kg... 500kg, Type N/C3/C3MR

- Aluminium alloy construction
- Compatible with other sources
- Single point 600 x 600mm platform
- Approved according to OIML R60
- Ex-Version available (MP52/...E)

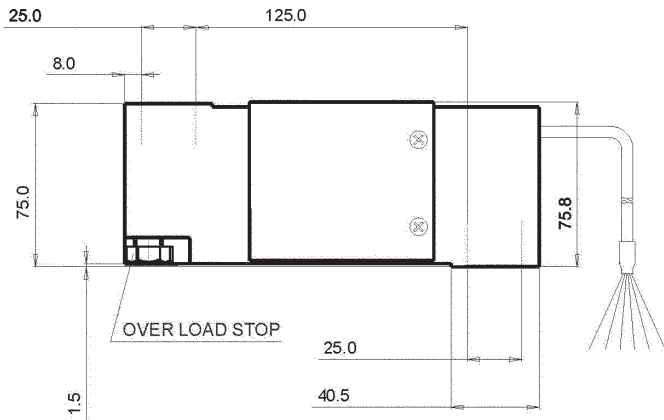
Applications

- Bench scales
- Counting scales
- Checkweigher

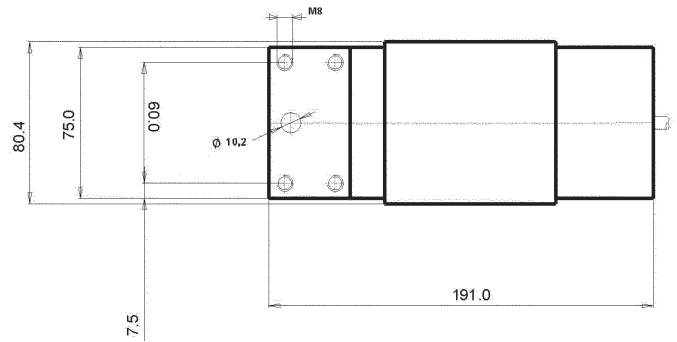
Technical Data		N	C3	C3MR	
Accuracy class		0.03	0.02	0.02	% E_{max}
Maximum capacity	E_{max}	s. table	s. table	s. table	
Max. usable load	E_u	150	150	150	% E_{max}
Destructive load	E_d	> 300	> 300	> 300	% E_{max}
Minimum LC verification interval $v_{min} = E_{max}/Y$	Y	-	6,000	10,000	
Rated output	C_n	2	2	2	mV/V
Tolerance on rated output	d_c	≤ 10	≤ 10	≤ 10	% C_n
Zero output signal	S_{min}	≤ 10	≤ 10	≤ 10	% C_n
Creep, during 30min.	d_{cr}	≤ 0.025	≤ 0.0167	≤ 0.0167	% C_n
Temperature effect on S_{min}	$TK_{S_{min}}$	≤ 0.06	≤ 0.023	≤ 0.014	% $C_n/10K$
Temperature effect on C	TK_c	≤ 0.014	≤ 0.01	≤ 0.01	% $C_n/10K$
Input impedance	R_{LC}	415 ± 15	415 ± 15	415 ± 15	Ω
Output impedance	R_o	350 ± 3	350 ± 3	350 ± 3	Ω
Insulation impedance	R_{IS}	> 5,000	> 5,000	> 5,000	MΩ
Recommended supply voltage	B_u	10	10	10	V
Maximum supply voltage	U_{max}	15	15	15	V
Nominal ambient temperature range	B_T	-10 to +40	-10 to +40	-10 to +40	° C
Usable ambient temperature range	B_{Tu}	-30 to +70	-30 to +70	-30 to +70	° C

Technical Data		N	C3	C3MR	
Nominal deflection	s_{nom}	≤ 0.6	≤ 0.6	≤ 0.6	mm
Cable length		3	3	3	m
Environmental protection		IP 65	IP 65	IP 65	

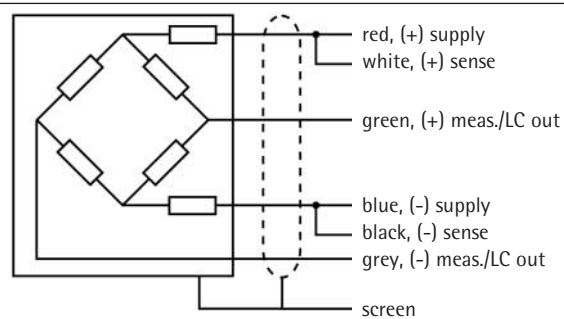
The technical data given here serve only as a product description and must not be interpreted as guaranteed characteristics in the legal sense.



Dimensions in mm



Dimensions in mm



Certificate of conformity

Features: II 1GD T85°C EEx ia IIC T6, II 1GD T115°C EEx ia IIC T4
Reg. Number: SIRA 04 ATEX 2143x

Order number for ATEX load cells

9408 6.. ..
e.g. MP52/100kg C3 E = 9408 652 07110

Order information

Type	Order number	Type	Order number	Type	Order number	Max. capacity (2mV/V)
MP52/50kg N	9408 252 01050	MP52/50kg C3	9408 252 03050	MP52/50kg C3MR	9408 252 07050	50kg
MP52/75kg N	9408 252 01075	MP52/75kg C3	9408 252 03075	MP52/75kg C3MR	9408 252 07075	75kg
MP52/100kg N	9408 252 01110	MP52/100kg C3	9408 252 03110	MP52/100kg C3MR	9408 252 07110	100kg
MP52/150kg N	9408 252 01115	MP52/150kg C3	9408 252 03115	MP52/150kg C3MR	9408 252 07115	150kg
MP52/200kg N	9408 252 01120	MP52/200kg C3	9408 252 03120	MP52/200kg C3MR	9408 252 07120	200kg
MP52/250kg N	9408 252 01125	MP52/250kg C3	9408 252 03125	MP52/250kg C3MR	9408 252 07125	250kg
MP52/300kg N	9408 252 01130	MP52/300kg C3	9408 252 03130	MP52/300kg C3MR	9408 252 07130	300kg
MP52/500kg N	9408 252 01150	MP52/500kg C3	9408 252 03150	MP52/500kg C3MR	9408 252 07150	500kg