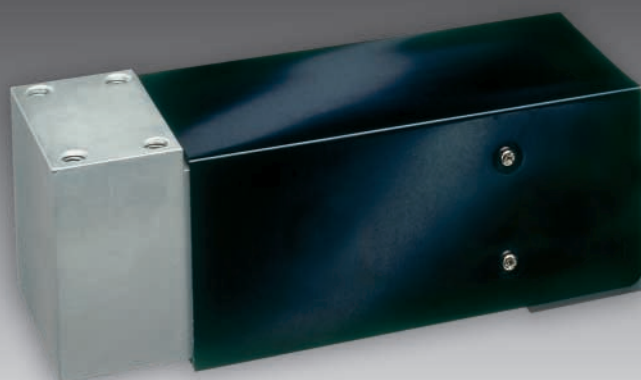




## MP 42

# High Capacity Single Point Load Cell



### 50kg... 500kg Type N/C3

- Aluminium alloy construction
- Compatible with other sources
- Single point 600 x 600mm platform
- Approved according to OIML R60

### Applications

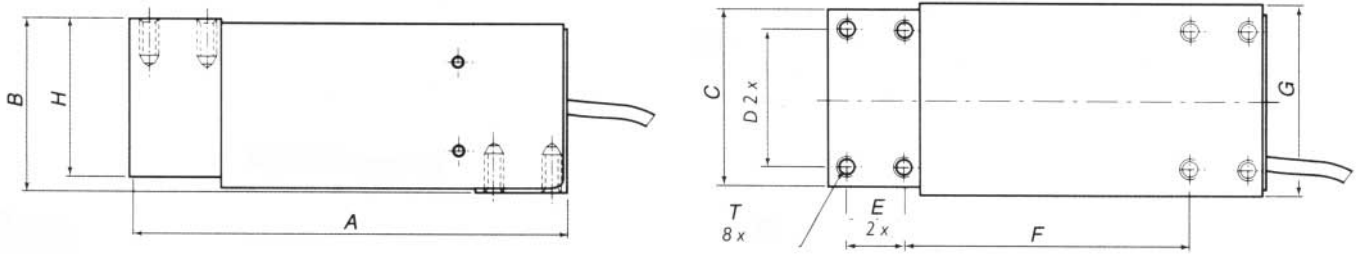
- Bench scales
- Counting scales
- Checkweigher

Technical Data		N	C3	
Accuracy class		0.03	0.02	%
Minimum dead load	$E_{min}$	0	0	% $E_{max}$
Rated capacity	$E_{max}$	s. table	s. table	
Safe overload	$E_U$	150	150	% $E_{max}$
Destructive load	$E_d$	> 300	> 300	% $E_{max}$
Minimum LC verification interval $v_{min} = E_{max}/Y$	Y	-	6,250	
Rated output	$C_n$	2	2	mV/V
Tolerance on rated output	$d_c$	$\leq 10$	$\leq 10$	% $C_n$
Zero output signal	$S_{min}$	$\leq 5$	$\leq 5$	% $C_n$
Repeatability	$\epsilon_R$	$\leq 0.01$	$\leq 0.01$	% $C_n$
Creep, during 30min.	$d_{cr}$	$\leq 0.03$	$\leq 0.017$	% $C_n$
Temperature effect on $S_{min}$	$TK_{S_{min}}$	$\leq 0.028$	$\leq 0.022$	% $C_n/10K$
Temperature effect on C	$TK_c$	$\leq 0.014$	$\leq 0.011$	% $C_n/10K$
Input impedance	$R_{LC}$	$400 \pm 20$	$400 \pm 20$	$\Omega$
Output impedance	$R_o$	$350 \pm 3.5$	$350 \pm 3.5$	$\Omega$
Insulation impedance	$R_{IS}$	> 2,000	> 2,000	M $\Omega$
Recommended supply voltage	$B_u$	10	10	V
Maximum supply voltage	$U_{max}$	15	15	V

### Technical Data

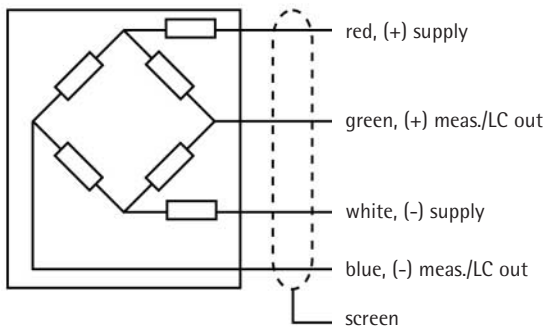
		N	C3	
Nominal ambient temperature range	$B_T$	-10 to +40	-10 to +40	° C
Usable ambient temperature range	$B_{TU}$	-20 to +65	-20 to +65	° C
Nominal deflection	$s_{nom}$	$\leq 0.5$	$\leq 0.5$	mm
Cable	-	3m, 4 wires with screen	3m, 4 wires with screen	
Protection class	-	IP 65	IP 65	

The technical data given here serve only as a product description and must not be interpreted as guaranteed characteristics in the legal sense.



Dimensions all in mm

Capacity	A	B	C	D	E	F	G	H	I	T
50kg... 500kg	191	75.4	76.2	59.9	24.9	125	81.4	67.8	25	M8 x 1.25 DP 16



### Order information

Type	Order number	Type	Order number	Max. capacity (2mV/V)
MP42/51 N	9408 800 42511	MP42/51 C3	9408 800 42517	50kg
MP42/76 N	9408 800 42761	MP42/76 C3	9408 800 42767	75kg
MP42/12 N	9408 800 42121	MP42/12 C3	9408 800 42127	100kg
MP42/17 N	9408 800 42171	MP42/17 C3	9408 800 42117	150kg
MP42/22 N	9408 800 42221	MP42/22 C3	9408 800 42227	200kg
MP42/32 N	9408 800 42321	MP42/32 C3	9408 800 42327	300kg
MP42/52 N	9408 800 42521	MP42/52 C3	9408 800 42527	500kg