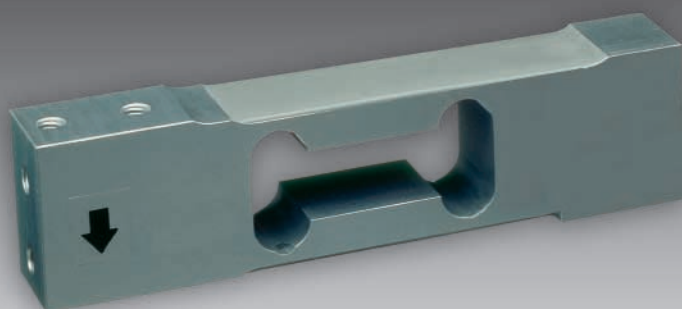




## MP 41

### Single Point Load Cell



#### 5kg... 100kg Type N/C3

- Aluminium alloy construction
- Compatible with other sources
- Single point 400 x 400mm platform
- Approved according to OIML R60

#### Applications

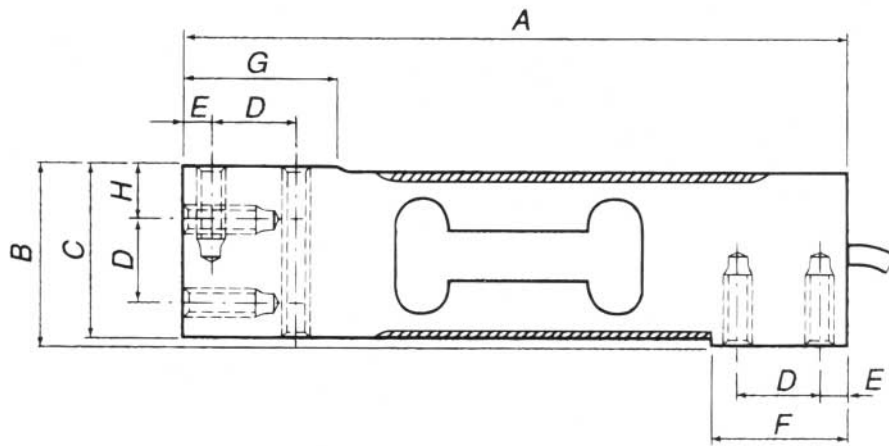
- Bench scales
- Counting scales
- Checkweigher

Technical Data		N	C3	
Accuracy class		0.03	0.02	%
Minimum dead load	$E_{min}$	0	0	% $E_{max}$
Rated capacity	$E_{max}$	s. table	s. table	
Safe overload	$E_U$	150	150	% $E_{max}$
Destructive load	$E_d$	> 300	> 300	% $E_{max}$
Minimum LC verification interval $v_{min} = E_{max}/Y$	Y	-	6,250	
Rated output	$C_n$	2	2	mV/V
Tolerance on rated output	$d_c$	$\leq 10$	$\leq 10$	% $C_n$
Zero output signal	$S_{min}$	$\leq 5$	$\leq 5$	% $C_n$
Repeatability	$\epsilon_R$	$\leq 0.01$	$\leq 0.01$	% $C_n$
Creep, during 30min.	$d_{cr}$	$\leq 0.03$	$\leq 0.017$	% $C_n$
Temperature effect on $S_{min}$	$TK_{S_{min}}$	$\leq 0.028$	$\leq 0.022$	% $C_n/10K$
Temperature effect on C	$TK_c$	$\leq 0.014$	$\leq 0.011$	% $C_n/10K$
Input impedance	$R_{LC}$	$400 \pm 20$	$400 \pm 20$	$\Omega$
Output impedance	$R_o$	$350 \pm 3.5$	$350 \pm 3.5$	$\Omega$
Insulation impedance	$R_{IS}$	> 2,000	> 2,000	M $\Omega$
Recommended supply voltage	$B_u$	10	10	V
Maximum supply voltage	$U_{max}$	15	15	V

### Technical Data

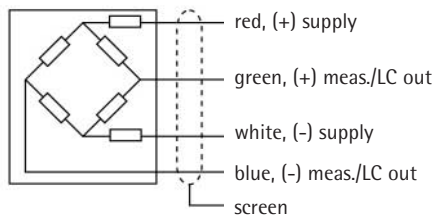
		N	C3	
Nominal ambient temperature range	B <sub>T</sub>	-10 to +40	-10 to +40	° C
Usable ambient temperature range	B <sub>TU</sub>	-20 to +65	-20 to +65	° C
Nominal deflection	S <sub>nom</sub>	≤ 0.4	≤ 0.4	mm
Cable	-	1m, 4 wires with screen	1m, 4 wires with screen	
Protection class	-	IP 65	IP 65	

The technical data given here serve only as a product description and must not be interpreted as guaranteed characteristics in the legal sense.



Dimensions all in mm

Capacity	A	B	C	D	E	F	G	H	I	T
5kg... 100kg	150	40	38.5	19	6	31	34	12	25	M6 x 1.0 DP 16



### Order information

Type	Order number	Type	Order number	Max. capacity (2mv/V)
MP41/50 N	9408 800 41501	MP41/50 C3	9408 800 41507	5kg
MP41/11 N	9408 800 41111	MP41/11 C3	9408 800 41117	10kg
MP41/16 N	9408 800 41161	MP41/16 C3	9408 800 41167	15kg
MP41/21 N	9408 800 41211	MP41/21 C3	9408 800 41217	20kg
MP41/31 N	9408 800 41311	MP41/31 C3	9408 800 41317	30kg
MP41/51 N	9408 800 41511	MP41/51 C3	9408 800 41517	50kg
MP41/76 N	9408 800 41761	MP41/76 C3	9408 800 41767	75kg
MP41/12 N	9408 800 41121	MP41/12 C3	9408 800 41127	100kg

Specifications subject to change without notice.  
Printed in Germany.  
n/sart • C  
9498 708 41001  
Version 01.2005

Sartorius Hamburg GmbH  
Meiendorfer Straße 205  
22145 Hamburg, Germany  
Tel. +49.40.67960.303  
Fax +49.40.67960.383  
www.sartorius.com