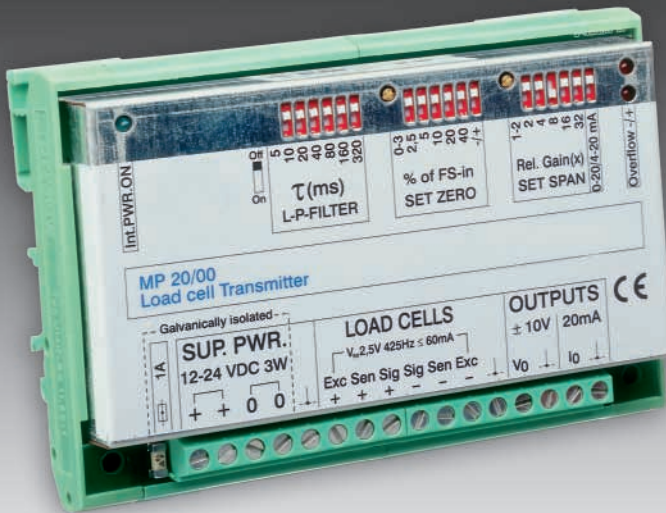




## MP 20

### Analogue Load Cell Transmitter



- Linearity better than 0.01% of full scale
- Analogue outputs 0/4 to 20mA and 0 to 10V<sub>DC</sub> simultaneously usable
- Four load cells of 350Ω can be powered
- Active low pass filter from 0.25Hz to 32Hz
- Supply voltage 12- 24V<sub>DC</sub> or 110V<sub>AC</sub>/230V<sub>AC</sub> via MP 20/20
- Zero offset up to +/- 80% of full scale
- Input signal range up to 3.3mV/V
- Easy calibration
- Easy mounting by using Phoenix DIN rail module

#### Protection class

Housing: IP 40 (DIN 40050)

#### Power supply

12 - 24V<sub>DC</sub> +10/-15%

#### Power consumption:

3W max.

#### Mounting

Snap on DIN-rail mountable by Phoenix UMK modul

#### Load cell input

Max. four 350Ω load cells  
 Excitation voltage: 2,5V<sub>AC</sub> 425Hz  
 Excitation current: max. 60mA  
 Input gain range for F.S.:  
 0 - 0.17mV/V up to 0 - 3.3mV/V  
 Dead load compensation:  
 80% of max. input  
 Max. cable length: appr. 150m

#### Analogue output

Voltage output (Vout):  
 +/- 10V<sub>DC</sub> at min 500Ω  
 Current loop output (Iout):  
 0/4-20mA at max. 500Ω  
 Deviation between Vout and Iout:  
 3% of F.S.

#### Accuracy

Linearity: < 0.005% F.S at 23°C  
 Temperature effect on zero: < 0.003%/K  
 Temperature effect on span: < 0.0015% K  
 Max. deviation 0-F.S.: < 50ppm  
 Signal filter:  
 active low pass filter in 64 steps  
 from 0.25-32Hz  
 Drift 5min. upon power on:  
 < 20ppm of F.S.

#### Environmental conditions

Temperature range: -10 to +40°C  
 Dimensions in mm:  
 113 x 77 x 37 (W x D x H)  
 Weight: appr. 0.2kg  
 Warm up time: 30 minutes

#### Optional dual setpoint unit MP 20/10

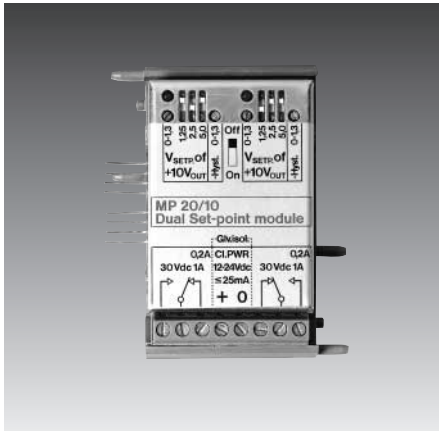
Two FORM-C reed relays  
 Up to eight setpoints can be arranged with four units  
 Relay coil voltage: 12-24V<sub>DC</sub>  
 Relay coil current: < 25mA

#### Optional power supply unit MP 20/20

110/230V<sub>AC</sub>

#### Optional load cell junction unit MP 20/30

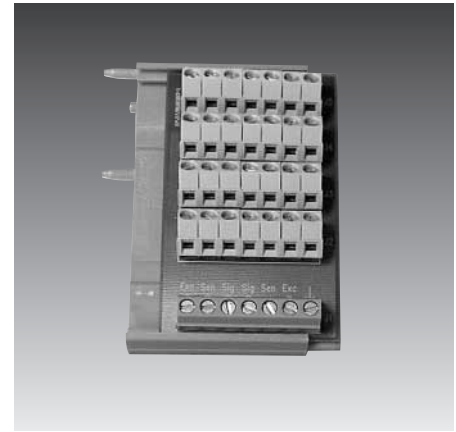
up to four 350Ω load cells connectable



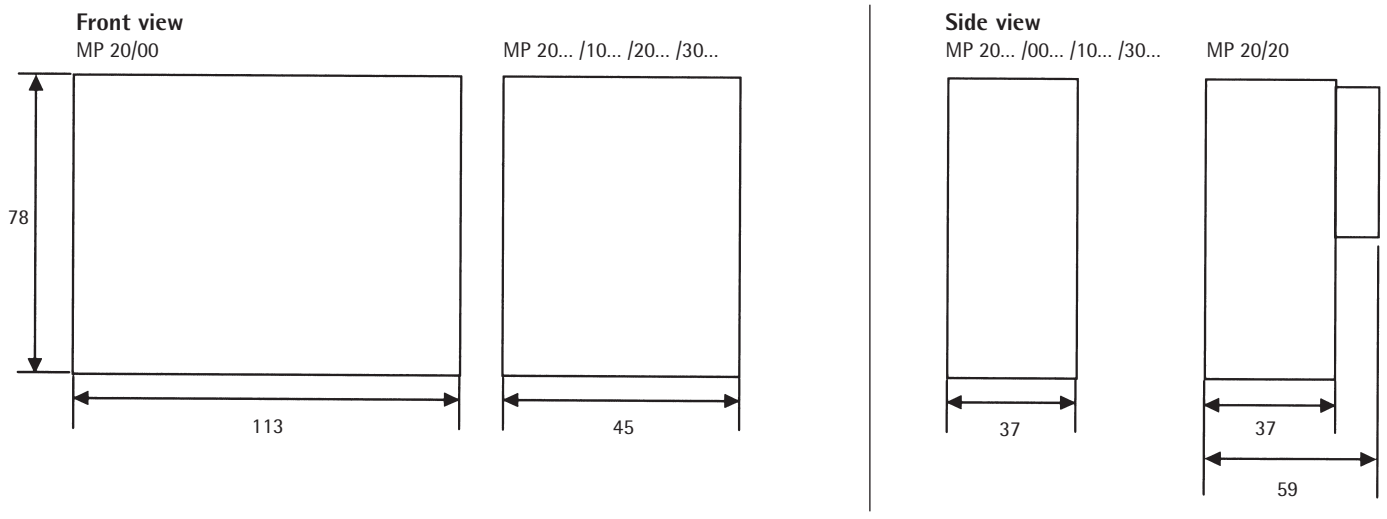
MP 20/10 dual setpoint unit



MP 20/20 110/230V<sub>ac</sub> power supply



MP 20/30 four LC junction unit



Dimensions in mm

**Order information**

Type	Description	Order number
MP20/00	analogue load cell transmitter	9408 800 20001
MP20/10	dual set point unit	9408 800 20101
MP20/20	110/230V <sub>ac</sub> power supply unit	9408 800 20201
MP20/30	four LC connection unit	9408 800 20301

The technical data given here serve only as a product description and must not be interpreted as guaranteed characteristics in the legal sense.